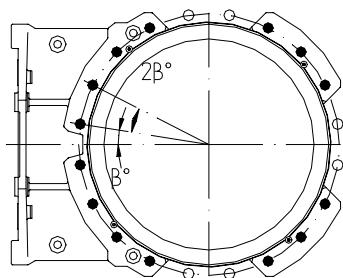


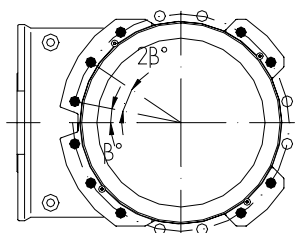
## MV DN 50-600

### Flange drilling

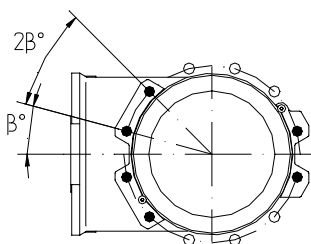
### ANSI B16.5 Class 150 metric thread



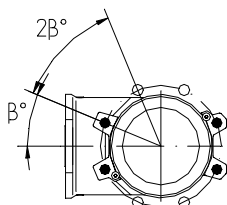
DN 500-600



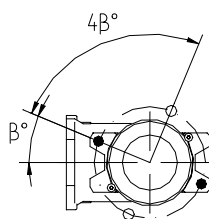
DN 400-450



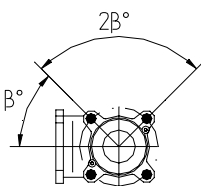
DN 250-350



DN 100-200



DN 80



DN 50-65

● = Tapped holes ○ = Throughgoing holes

Size (DN)	50	65	80	100	125	150	200	250	300	350	400	450	500	600
Outside flange diam. (mm)	152.4	177.8	190.5	228.6	254	279.4	342.9	406.4	482.6	533	597	635	699	813
Bolt circle diameter (mm)	120.7	139.7	152.4	190.5	215.9	241.3	298.5	362	431.8	476.3	539.8	577.9	635	749.3
Face to face dimension (mm)	44	44	51	51	56	60	60	69	78	78	89	89	114	114
No. of throughgoing bolts (○)	2	4	4	4	4	4	4	6	6	6	6	6	6	6
No. of tapped hole/side. (●)	4	4	2	4	4	4	4	6	6	6	10	10	14	14
Bolt size (M)	16	16	16	16	20	20	20	24	24	27	27	30	30	33
Size of throughgoing holes in flange. (mm)	φ18	φ18	φ18	φ18	φ22	φ22	φ22	φ26	φ26	φ30	φ30	φ33	φ33	φ36
B°	45	45	22.5	22.5	22.5	22.5	22.5	15	15	15	11.25	11.25	9	9
Screw lengths <sup>1)</sup>	8 <sup>2)</sup>	8 <sup>2)</sup>	12	12	12	14	13 <sup>3)</sup>	17	20	19	22	22	27	27

<sup>1)</sup> Add the values in the table with the thickness of the pipe flanges, the washers and the estimated thickness of the gasket.

<sup>2)</sup> The screws on the seat side has to be 3 mm longer.

<sup>3)</sup> The screws on the seat side has to be 10 mm longer for face-to-face TAPPI.

All specifications subject to change without notice.