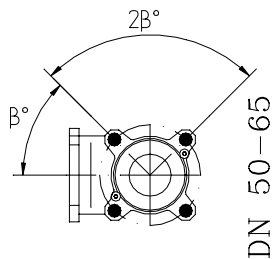
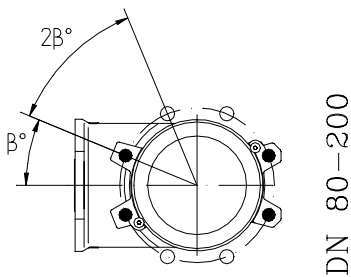
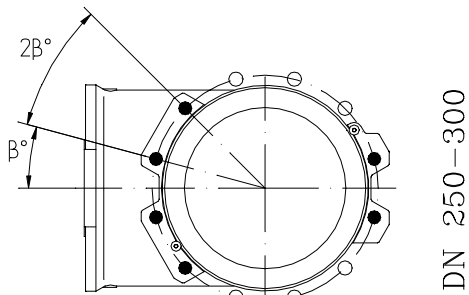
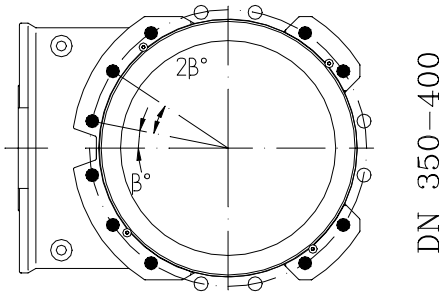
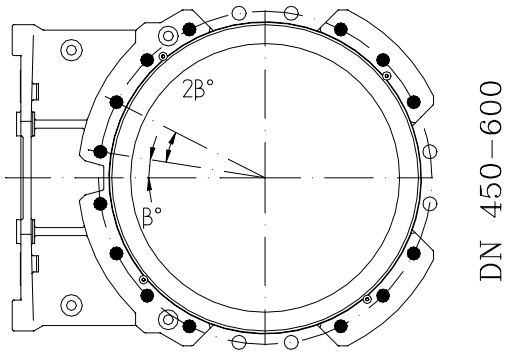


**MV DN 50-600**  
**EN 1092 PN10**

**Flange drilling**



● = Tapped holes    ○ = Throughgoing holes

Size (DN)	50	65	80	100	125	150	200	250	300	350	400	450	500	600
Outside flange diam (mm)	165	185	200	220	250	285	340	395	445	505	565	615	670	780
Bolt circle diameter (mm)	125	145	160	180	210	240	295	350	400	460	515	565	620	725
Face to face dimension (mm)	41	41	51	56	60	60	69	78	78	89	89	89	114	114
No. of throughgoing bolts (○)	-	-	4	4	4	4	4	6	6	6	6	6	6	6
No. of tapped hole/side (●)	4	4	4	4	4	4	4	6	6	10	10	14	14	14
Bolt size	M16	M16	M16	M16	M16	M16	M20	M20	M20	M20	M24	M24	M24	M27
Size of throughgoing holes in flange (mm)	φ18	φ18	φ18	φ18	φ18	φ18	φ22	φ22	φ22	φ22	φ26	φ26	φ26	φ30
B°	45	45	22.5	22.5	22.5	22.5	22.5	15	15	11.25	11.25	9	9	9
Screw lengths <sup>1)</sup>	8 <sup>2)</sup>	8 <sup>2)</sup>	12	12	12	14	13	17	20	19	22	22	27	27

<sup>1)</sup> Add the values in the table with the thickness of the pipe flanges, the washers and the estimated thickness of the gasket.

<sup>2)</sup> The screws on the seatside has to be 3 mm longer.

All specifications subject to change without notice.