



Model 800



Model 1216



Model 1216C



Model 1216H



Model 1216B



Model 1216B



Model 1216 HP PN-100/250/400



Model 1400



Model 1415



Model 1000



Model 1100

INDEX

Type of valve	Connections	Rating	Material	Pag.
1. BRONZE VALVE				
1.1 Model 800	Threaded BSP and NPT	PN-25	Bronze	3
2. THREADED VALVE				
2.1 Model 1216	Threaded BSP and NPT	PN-40	Stainless steel	4
2.2 Model 1216 HP	Threaded BSP and NPT	PN-100-400	Stainless steel	5
3. FLANGES				
3.1 Model 1216B	ANSI x ANSI or BSP or NPT EN x EN or BSP or NPT	150# RF	Stainless steel	6
		300# RF	Stainless steel	
		PN 16	Stainless steel	
		PN 40	Stainless steel	
3.2 Model 1400	Flanges EN	PN-16	Nodular/ carbon steel/ stainless steel	7
		PN-25	Nodular/ carbon steel/ stainless steel	
		PN-40	Carbon steel and stainless steel	
		PN-63	Carbon steel and stainless steel	
		PN-100	Carbon steel and stainless steel	
3.3 Model 1415	Flanges ANSI B 16.5	150# RF	Carbon steel and stainless steel	9
		300# RF	Carbon steel and stainless steel	
		600# RF	Carbon steel and stainless steel	
		900# RF	Carbon steel and stainless steel	
		1500# RF	Carbon steel and stainless steel	
5. CLAMP VALVES				
5.1 Model 1216C	CLAMP ISO 2852	PN-10	Stainless steel	12
6. VACUUM RELIEF VALVES				
6.1 Model 1000	Flanges/Threaded	PN-10	Al / Carbon steel/ Stainless steel	13
6.1 Model 1100	Flanges/Threaded	PN-10	Al / Carbon steel/ Stainless steel	14
7. ACCESORIES				
7.1 Accesories	EN/ANSI	PN-10/400	Stainless steel / Al/ Nickel/ Monel Inconel/ Hastelloy C276	15

Model 1216

TECHNICAL DATA SHEET



Description

Type	Safety and Relief valve
Connections	Threaded BSP / NPT
Rating	PN-40
Material	Stainless steel 316 L
Temperature range	-10 to +350°C
Cryogenic service until	-196°C

Requirements

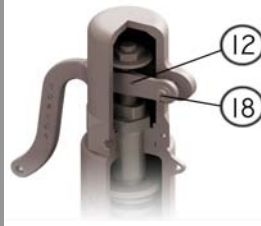
Calculation	EN-4126-1 / 7
Design	EN-12516-1, EN-4126-1 / 7
	DIN 259 and ANSI B2.1
Materials	EN
Inspection	EN-4126-1 / 7

Construction and materials

Item	Description	Material	
		Standard	Cryogenic
1	Nozzle	SA 351 CF-3M	SA 351 CF-3M
2	Body	SA 351 CF-3M	SA 351 CF-3M
4	Cap	SA 351 CF 8	SA 351 CF 8
5	Disc	316 L SS	316 L SS
6	Guide	SA 351 CF-3M	SA 351 CF-3M
7	Push Road	316 L SS	316 L SS
8	Spring Button	303 SS	303 SS
9	Ajusting Screw	303 SS	303 SS
10	Tensor Nut	303 SS	303 SS
11	Spring	303 SS	17 / 7PH
12	Lever	SA 351 CF 8	SA 351 CF 8
17	Release nut	306 L SS	306 L SS
18	Lever axis	303 SS	303 SS
19	Packing lever axis	303 SS	303 SS
20	Gasket	PTFE	PCTFE
21	Gasket	PTFE	PCTFE
22	Gasket	Viton	PCTFE
28	Soft seat	Viton / PTFE	Metal

○ Recommended spare parts

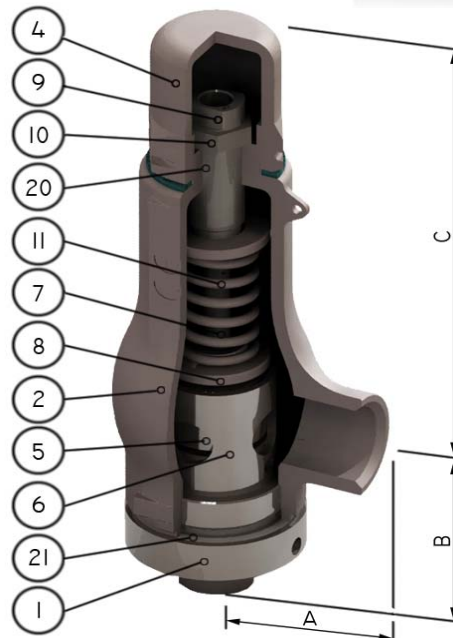
Palanca manual
Lifting device



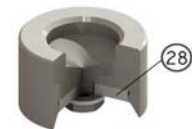
Palanca estanca
Sealed packing lever



T. Prueba
Test gag



Obturator o-ring
Disc o-ring



Technical information

Applications	Steam, gases, vapours and liquids
Min. Set pressure	0,2 barg
Overpressure	10%
Blowdown	Gases 10%, liquids 20%
Tolerance Set pressure	± 3%
Discharge coefficients	k= 0,55 for gases k= 0,48 for liquids

Dimensions

Inlet	Outlet	Orifice	Area (mm ²)	A (mm)	B (mm)	C (mm)	Weight (kg)
1/2"	3/4"	13	133	45	57	155	2,2
1/2"	1"	13	133	45	57	155	2,2
3/4"	1"	14	154	45	57	155	2,2
1"	1"	16	201	45	60	155	2,2
1"	1 1/4"	16	201	45	61	155	2,3
1"	2"	22	380	62	87	234	4,5
1 1/4"	1 1/4"	18	254	45	62	155	2,4
1 1/2"	2"	28	616	62	89	234	4,6
2"	2"	32	804	62	93	234	5,1



Model 1216 HP

TECHNICAL DATA SHEET

Description

Type	Safety and Relief valve
Connections	Threaded BSP / NPT
Rating	PN-250&400
Material	Stainless steel 316 L
Temperature range	-10 to +350°C
Cryogenic service until	-196°C

Requirements

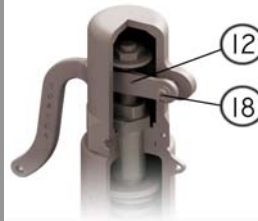
Calculation	EN-4126-1 / 7
Design	EN-12516-1, EN-4126-1 / 7 DIN 259 and ANSI B2.1
Materials	EN
Inspection	EN-4126-1 / 7

Construction and materials

Item	Description	Material	
		Standard	Cryogenic
1	Nozzle	SA 351 CF-3M	SA 351 CF-3M
2	Body	SA 351 CF-3M	SA 351 CF-3M
4	Cap	SA 351 CF 8	SA 351 CF 8
5	Disc	316 L SS+ PTFE	
6	Guide	SA 351 CF-3M	SA 351 CF-3M
7	Push Road	316 L SS	316 L SS
8	Spring Button	303 SS	303 SS
9	Ajusting Screw	303 SS	303 SS
10	Tensor Nut	303 SS	303 SS
11	Spring	303 SS	17 / 7PH
12	Lever	SA 351 CF 8	SA 351 CF 8
17	Release nut	306 L SS	306 L SS
18	Lever axis	303 SS	303 SS
19	Packing lever axis	303 SS	303 SS
20	Gasket	PTFE	PCTFE
21	Gasket	PTFE	PCTFE
22	Gasket	Viton	PCTFE
28			

○ Recommended spare parts

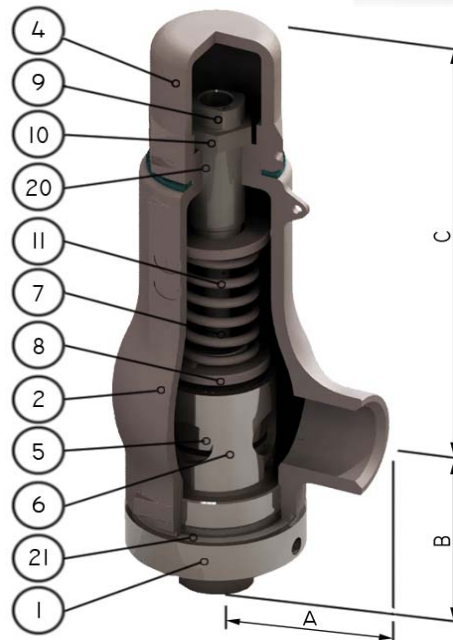
Palanca manual
Lifting device



Palanca estanca
Sealed packing lever



T. Prueba
Test gag



Technical information

Applications	Steam, gases, vapours and liquids
Min. Set pressure	0,2 barg
Overpressure	10%
Blowdown	Gases 10%, liquids 20%
Tolerance Set pressure	± 3%
Discharge coefficients	k= 0,5 for gases k= 0,4 for liquids

Dimensions

Inlet	Outlet	Orifice	Area (mm ²)	A (mm)	B (mm)	C (mm)	Weight (kg)
PN250	PN40						
1/2"	3/4"	9	64	45	57	155	3
3/4"	3/4"	9	64	45	57	155	3
1"	1"	9	64	45	57	155	3
PN400	PN40						
1/2"	3/4"	6	28	45	57	155	3
3/4"	3/4"	6	28	45	57	155	3
1"	1"	6	28	45	57	155	3
PN100	PN40						
1"	2"	16	201	62	95	234	5
1 1/4"	2"	18	254	62	100	234	5
1 1/2"	2"	20	314	62	102	234	6
2"	2"	22	380	62	105	234	6,3



Description

Type	Safety and Relief valve
Connections	Flanged EN 1092
Rating	PN-16 / 25 / 40 / 63 / 100
Material	Nodular Iron, Carbon steel
	Stainless steel
Temperature range	-28°C to +350°C

Requirements

Calculation	EN-4126-1 / 7
Design / Size	EN-12516-1, EN-4126-1 / 7
Materials	EN / ASTM
Inspection	EN-4126-1 / 7 API 527 MSS-SP-55
Tolerances	EN-4126-1 and ASME UG-126

Construction and materials

Item	Description	PN-16/25		PN-40		PN-63/100	PN-16/25/40		PN-63/100
		Carbon steel		Carbon steel		Carbon steel	Stainless steel		Stainless st.
		DN-15x25 to DN-40x65 PN-16/25	DN-50x80 to DN-200x300 PN-16/25	DN-15x25 to DN-50x80 PN-40	DN-65x100 to DN-300x400 PN-40	DN-15x25 to DN-65x100 PN-63/100	DN-15x25 to DN-50x80 PN-16/40	DN-65x100 to DN-300x400 PN-16/40	DN-15x25 to DN-65x100 PN-63/100
1	Nozzle	C.S. + 308 L SS	C.S. + 308 L SS	C.S. + 308 L SS	C.S. + 308 L SS	316L + Stellite	AISI 316L	AISI 316L	316L + Stellite
2	Body	A106 Gr.B	EN-JS1030	A106 Gr.B	C.S. 1.0619	A106 Gr.B	AISI 316L	AISI 316L	AISI 316L
3	Bonnet	A106 Gr.B	EN-JS1030	A106 Gr.B	C.S. 1.0619	A106 Gr.B	AISI 316L	AISI 316L	AISI 316L
4	Cap	A351 CF-8	A351 CF-8	A351 CF-8	A351 CF-8	A351 CF8	A351 CF-8	A351 CF-8	A351 CF-8
5	Disc	AISI 420	C.S. + 308 L SS	AISI 420	C.S. + 308 L SS	AISI 316L	AISI 316L	AISI 316L	AISI 316L
6	Guide	C. Steel zn.	C.S. + 304 SS	C. Steel zn.	C.S. + 304 SS	C. Steel zn.	AISI 316L	AISI 316L	AISI 316L
7	Push Road	AISI 420	AISI 420	AISI 420	AISI 420	AISI 420	AISI 316L	AISI 316L	AISI 316L
8	Spring Button	C. Steel zn.	C. Steel zn.	C. Steel zn.	C. Steel zn.	C. Steel zn.	AISI 303	AISI 303	AISI 303
9	Ajusting Screw	Brass	AISI-420	AISI 303	AISI-420	AISI303	AISI 303	AISI 303	AISI 303
10	Lock Nut	Brass	C. Steel zn.	AISI 303	C. Steel zn.	C. Steel zn.	AISI 303	AISI 303	AISI 303
11	Spring	Carbon steel	Carbon Steel	Carbon steel	Carbon Steel	Carbon steel	AISI 302	AISI 302	AISI 302
12	Lever	A 351 CF 8	A 351 CF 8	A 351 CF 8	A 351 CF 8	A 351 CF 8	A351 CF-8	A351 CF-8	A351 CF-8
17	Release nut	AISI 304	AISI 304	Carbon steel	AISI 304	Carbon steel	AISI 316L	AISI 316L	AISI 316L
18	Lever axis	AISI 303	AISI 303	AISI-303	AISI 303	AISI-303	AISI 303	AISI 303	AISI 303
19	Packing lever axis	AISI 303	AISI 303	AISI-303	AISI 303	AISI-303	AISI 303	AISI 303	AISI 303
20	Gasket cap	NBR+MF	NBR+MF	NBR+MF	NBR+MF	NBR+MF	PTFE	PTFE	PTFE
21	Gasket bonnet	NBR+MF	NBR+MF	NBR+MF	NBR+MF	NBR+MF	PTFE	PTFE	PTFE
22	Gasket pack. lever	Viton	Viton	Viton	Viton	Viton	Viton	Viton	Viton
27	Bellow	316 TI SS	316 TI SS	316 TI SS	316 TI SS	316 TI SS	AISI 316TI	AISI 316TI	AISI 316TI
28	Soft seat	Viton / PTFE	Viton / PTFE	Viton / PTFE	Viton / PTFE	Viton / PTFE	Viton / PTFE	Viton / PTFE	Viton / PTFE

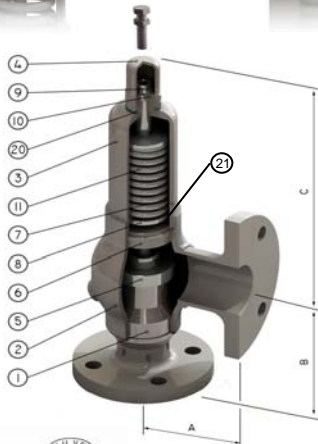
○ Recommended spare parts

Palanca manual
Lifting device



T. Prueba
Test gag

Palanca estanca
Sealed packing lever



Cpo. intermedio abierto
Open bonnet



Obturator o-ring
Disc soft seat





Technical information

Applications	Steam, gases, vapours and liquids
Min. Set pressure	0,2 barg
Seat	metal-metal, PTFE, Viton, Nozzle SS+Stellite
Overpressure	10% for steam, gas and vapour 20% for fire exposure 25% for liquid on thermal relief
Blowdown	7%
Tolerance Set pressure	± 3%
Discharge coefficients	k= 0,64 for gases k= 0,5 for liquids



Fuelle
Bellows



Dimensions

Design	DN	TOSACA Model	Valve Size Inlet by Outlet	EN 1092 Flanges		Orif. (mm)	Area (mm ²)	Face Dimension (mm)			Weight (kg) W
				Inlet	Outlet			A	B	C	
	15	1400 PN 16	15 x 25	16	16	16	201	85	95	253	7
		1400 PN 25	15 x 25	25	16	16	201	85	95	253	7
		1400 PN 40	15 x 25	40	16	16	201	85	95	253	7
		1400 PN 63	15 x 25	63	16	13	133	85	95	253	7
		1400 PN100	15 x 25	100	16	13	133	85	95	253	7
	20	1400 PN 16	20 x 32	16	16	18	254	85	95	253	7
		1400 PN 25	20 x 32	25	16	18	254	85	95	253	7
		1400 PN 40	20 x 32	40	16	18	254	85	95	253	7
		1400 PN 63	20 x 32	63	16	13	133	100	105	253	7
		1400 PN100	20 x 32	100	16	13	133	100	105	253	7
	25	1400 PN 16	25 x 40	16	16	23,8	445	100	105	275	9
		1400 PN 25	25 x 40	25	16	23,8	445	100	105	275	9
		1400 PN 40	25 x 40	40	16	23,8	445	100	105	275	9
		1400 PN 63	25 x 50	63	16	20	314	110	100	275	9
		1400 PN100	25 x 50	100	16	16	201	110	100	275	9
	32	1400 PN 16	32 x 50	16	16	29,5	683	110	115	325	12
		1400 PN 25	32 x 50	25	16	29,5	683	110	115	325	12
		1400 PN 40	32 x 50	40	16	29,5	683	110	115	325	12
1400 PN 63		32 x 50	63	16	23,8	445	110	115	325	12	
1400 PN100		32 x 50	100	16	20	314	110	115	325	12	
40	1400 PN 16	40 x 65	16	16	36	1018	115	140	325	14	
	1400 PN 25	40 x 65	25	16	36	1018	115	140	325	14	
	1400 PN 40	40 x 65	40	16	36	1018	115	140	325	14	
	1400 PN 63	40 x 65	63	16	26	531	115	140	325	14	
	1400 PN100	40 x 65	100	16	23,8	445	115	140	325	14	
50	1400 PN 40	50 x 80	40	16	46	1662	120	150	400	21	
	1400 PN 63	50 x 80	63	16	32	804	120	150	400	21	
	1400 PN100	50 x 80	100	16	32	804	120	150	400	21	
	50	1400 PN 16	50 x 80	16	16	46	1662	120	150	400	25
		1400 PN 25	50 x 80	25	16	46	1662	120	150	400	25
	65	1400 PN 16	65 x100	16	16	59,5	2781	140	170	450	36
		1400 PN 25	65 x100	25	16	59,5	2781	140	170	450	36
		1400 PN 40	65 x100	40	16	59,5	2781	140	170	450	36
		1400 PN 63	65 x100	63	16	48	1810	140	170	450	36
		1400 PN100	65 x100	100	16	39	1195	140	170	450	36
	80	1400 PN 16	80 x 125	16	16	72	4072	160	195	625	58
		1400 PN 25	80 x 125	25	16	72	4072	160	195	625	58
		1400 PN 40	80 x 125	40	16	72	4072	160	195	625	58
	100	1400 PN 16	100 x 150	16	16	90	6362	180	220	663	85
		1400 PN 25	100 x 150	25	16	90	6362	180	220	663	85
		1400 PN 40	100 x 150	40	16	90	6362	180	220	663	85
	125	1400 PN 16	125 x 200	16	16	105	8659	200	250	760	140
		1400 PN 25	125 x 200	25	16	105	8659	200	250	760	140
		1400 PN 40	125 x 200	40	16	105	8659	200	250	760	140
	150	1400 PN 16	150 x 250	16	16	125	12272	242	240	760	150
		1400 PN 25	150 x 250	25	16	125	12272	242	240	760	150
		1400 PN 40	150 x 200	40	16	125	12272	242	240	760	150
	200	1400 PN 16	200 x 300	16	16	153	18385	300	290	795	200
250	1400 PN 16	200 x 350	16	16	153	31415	406	305	1390	750	
300	1400 PN 16	300 x 400	16	16	153	40808	406	359	1432	850	
400	1400 PN 16	400 x 500	16	16	305	72950	533	432	1943	1850	

Dimensions

Design	DN	TOSACA Model	Valve Size Inlet by Outlet	EN 1092 Flanges		Orif. (mm)	Area (mm ²)	Face Dimension (mm)			Weight (kg) W
				Inlet	Outlet			A	B	C	
	15	1400 PN 16	15 x 25	16	16	16	201	85	95	253	7
		1400 PN 25	15 x 25	25	16	16	201	85	95	253	7
		1400 PN 40	15 x 25	40	16	16	201	85	95	253	7
		1400 PN 63	15 x 25	63	16	13	133	85	95	253	7
		1400 PN100	15 x 25	100	16	13	133	85	95	253	7
	20	1400 PN 16	20 x 32	16	16	18	254	85	95	253	7
		1400 PN 25	20 x 32	25	16	18	254	85	95	253	7
		1400 PN 40	20 x 32	40	16	18	254	85	95	253	7
		1400 PN 63	20 x 32	63	16	13	133	100	105	253	7
		1400 PN100	20 x 32	100	16	13	133	100	105	253	7
	25	1400 PN 16	25 x 40	16	16	23,8	445	100	105	275	9
		1400 PN 25	25 x 40	25	16	23,8	445	100	105	275	9
		1400 PN 40	25 x 40	40	16	23,8	445	100	105	275	9
		1400 PN 63	25 x 50	63	16	20	314	110	100	275	9
		1400 PN100	25 x 50	100	16	16	201	110	100	275	9
	32	1400 PN 16	32 x 50	16	16	29,5	683	110	115	325	12
		1400 PN 25	32 x 50	25	16	29,5	683	110	115	325	12
		1400 PN 40	32 x 50	40	16	29,5	683	110	115	325	12
		1400 PN 63	32 x 50	63	16	23,8	445	110	115	325	12
		1400 PN100	32 x 50	100	16	20	314	110	115	325	12
40	1400 PN 16	40 x 65	16	16	36	1018	115	140	325	14	
	1400 PN 25	40 x 65	25	16	36	1018	115	140	325	14	
	1400 PN 40	40 x 65	40	16	36	1018	115	140	325	14	
	1400 PN 63	40 x 65	63	16	26	531	115	140	325	14	
	1400 PN100	40 x 65	100	16	23,8	445	115	140	325	14	
50	1400 PN 40	50 x 80	40	16	46	1662	120	150	400	21	
	1400 PN 63	50 x 80	63	16	32	804	120	150	400	21	
	1400 PN100	50 x 80	100	16	32	804	120	150	400	21	
	50	1400 PN 16	50 x 80	16	16	46	1662	120	150	400	25
		1400 PN 25	50 x 80	25	16	46	1662	120	150	400	25
	65	1400 PN 16	65 x100	16	16	59,5	2781	140	170	450	36
		1400 PN 25	65 x100	25	16	59,5	2781	140	170	450	36
		1400 PN 40	65 x100	40	16	59,5	2781	140	170	450	36
		1400 PN 63	65 x100	63	16	48	1810	140	170	450	36
		1400 PN100	65 x100	100	16	39	1195	140	170	450	36
	80	1400 PN 16	80 x 125	16	16	72	4072	160	195	625	58
		1400 PN 25	80 x 125	25	16	72	4072	160	195	625	58
		1400 PN 40	80 x 125	40	16	72	4072	160	195	625	58
	100	1400 PN 16	100 x 150	16	16	90	6362	180	220	663	85
		1400 PN 25	100 x 150	25	16	90	6362	180	220	663	85
		1400 PN 40	100 x 150	40	16	90	6362	180	220	663	85
	125	1400 PN 16	125 x 200	16	16	105	8659	200	250	760	140
		1400 PN 25	125 x 200	25	16	105	8659	200	250	760	140
		1400 PN 40	125 x 200	40	16	105	8659	200	250	760	140
	150	1400 PN 16	150 x 250	16	16	125	12272	242	240	760	150
		1400 PN 25	150 x 250	25	16	125	12272	242	240	760	150
		1400 PN 40	150 x 200	40	16	125	12272	242	240	760	150
	200	1400 PN 16	200 x 300	16	16	153	18385	300	290	795	200
250	1400 PN 16	200 x 350	16	16	153	31415	406	305	1390	750	
300	1400 PN 16	300 x 400	16	16	153	40808	406	359	1432	850	
400	1400 PN 16	400 x 500	16	16	305	72950	533	432	1943	1850	

Description

Type	Safety and Relief valve
Connections	Flanged ASME/ANSI B16.5
Rating	150#/300# 600#/900#/1500#/2500#
Material	Carbon steel A 216 WCB/WCC Carbon steel A 217 WC6 Stainless steel A 351 CF3M Special constructions
Temperature range	-28°C to +400°C
Stainless steel	-96°C to +400°C

Requirements

Calculation	API RP 520
Design / Size	API STD 526, ASME Section VIII
Materials	EN / ASTM / ASME
Inspection	EN-4126-1 / 7 API STD 527 MSS-SP-55
Tolerances	EN-4126-1 and ASME UG-126

Construction and materials

Item	Description	Material	Material
		Carbon Steel	Stainless steel
1	Nozzle	AISI-316L	AISI-316L
2	Body	A216 WCB	A351 CF-3M
3	Bonnet	A216 WCB	A351 CF-3M
4	Cap	A351 CF 8	A351 CF 8
5	Disc	AISI-316L	AISI-316L
6	Guide	AISI-316L	AISI-316L
7	Push Road	AISI-316L	AISI-316L
8	Spring Button	C. Steel zn.	AISI-304
9	Ajusting Screw	AISI-420	AISI-303
10	Tensor Nut	C. Steel zn.	AISI-303
11	Spring	Carbon Steel	AISI-302
12	Lever	A351 CF 8	A351 CF 8
17	Release nut	AISI-316L	AISI-316L
18	Lever axis	AISI-303	AISI-303
19	Packing lever axis	AISI-303	AISI-303
20	Gasket	NBR+MF	NBR
21	Gasket	NBR+MF	NBR
22	Gasket	Viton	Viton
27	Bellow	AISI-316 TI	AISI-316 TI
28	Soft seat	Viton / PTFE	Viton / PTFE
24	Screw-nut	Carbon Steel	AISI-316

○ Recommended spare parts

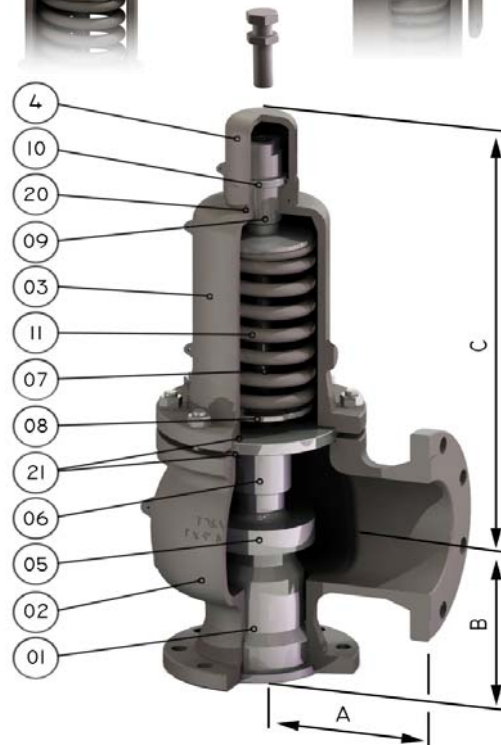
Palanca manual
Lifting device



Palanca estanca
Sealed packing lever



T. Prueba
Test gag



Cpo. intermedio abierto
Open bonnet



Fuelle
Bellows

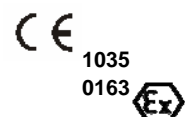


Obturador o-ring
Disc soft seat



Technical information

Applications	Steam, gases, vapours and liquids
Min. Set pressure	0,2 barg
Seat	metal-metal, PTFE, Viton, Nozzle SS+Stellite (600#, 900#, 1500# & 2500#)
Overpressure	10% for steam, gas and vapour 20% for fire exposure 25% for liquid on thermal relief
Blowdown	7%
Tolerance Set pressure	± 3%
Discharge coefficients	k= 0,975 for gases k= 0,64 for liquids



Design	Orif. Area (mm ²)	1415 150# RF				1415 300# RF				1415 600# RF				1415 900# RF				1415 1500# RF				1415 2500# RF				
		Dimension (mm)				Dimension (mm)				Dimension (mm)				Dimension (mm)				Dimension (mm)				Dimension (mm)				
		Valve Size ANSI rating	A	C	Weight (kg)	Valve Size ANSI rating	A	C	Weight (kg)	Valve Size ANSI rating	A	C	Weight (kg)	Valve Size ANSI rating	A	C	Weight (kg)	Valve Size ANSI rating	A	C	Weight (kg)	Valve Size ANSI rating	A	C	Weight (kg)	
	D / E 71/133	1/2" D/E 1"	75	255	5	1/2" D/E 1"	75	255	5	1/2" D/E 1"	75	255	7													
		150# /150#	95			300# /150#	95			600# / 150#	105															
		3/4" D/E 1"	75	255	5	3/4" D/E 1"	75	255	5	3/4" D/E 1"	75	255	7													
	F 201	1" D/E 1"	75	255	5	1" D/E 1"	75	255	5	1" D/E 1"	75	255	7													
		150# /150#	95			300# /150#	95			600# / 150#	105															
	G 346	1" D/E 2"	114	305	14	1" D/E 2"	114	305	14	1" D/E 2"	114	305	18	1 1/2"D/E 2"	140	315	19	1 1/2"D/E 2"	140	315	24	1 1/2"D/E 3"	178	325	30	
		150# /150#	105			300# /150#	105			600# / 150#	105			900# / 300#	105			1500# / 300#	105			2500# / 300#	140			
	H 531	1 1/2" F 2"	121	315	17	1 1/2" F 2"	121	315	17	1 1/2" F 2"	152	315	20	1 1/2" F 3"	165	315	22	1 1/2" F 3"	165	315	22	1 1/2" F 3"	178	325	30	
		150# /150#	124			300# /150#	124			600# / 150#	124			900# / 300#	124			1500# / 300#	124			2500# / 300#	140			
	J 830	1 1/2" G 3"	121	400	25	1 1/2" G 3"	121	400	25	1 1/2" G 3"	152	400	28	1 1/2" G 3"	165	430	25					2" G 3"	175	444	41	
		150# /150#	124			300# /150#	124			600# / 150#	124			900# / 300#	124							2500# / 300#	156			
	K 1195	1 1/2" H "3	124	400	25	1 1/2" H "3	124	400	27																	
		150# /150#	130			300# /150#	130			2"H 3"	162	400	32	2"H 3"	162	400	26	2" H 3"	162	430	25					
	L 1886	2" J 3"	124	400	27	2" J 3"	124	400	27																	
		150# /150#	137			300# /150#	137			600# / 150#	154			900# / 150#	154			1500# / 300#	154							
	M 2376	3" J 4"	181	570	56	3" J 4"	181	570	56																	
150# /150#		184			300# /150#	184			600# / 150#	184			900# / 150#	184			1500# / 300#	184								
N 2827	3" K 4"	162	570	56	3" K 4"	162	570	56																		
	150# /150#	156			300# /150#	156			600# / 150#	184			900# / 150#	198			1500# /300#	198								
O 4185	3" L 4"	165	570	56	3" L 4"	165	570	56																		
	150# /150#	156			300# /150#	156			4" L 6"	203	610	110	4" L 6"	222	820	120	4" L 6"	222	820	120						
P 4185	4" M 6"	184	610	88	4" M 6"	184	610	90																		
	150# /150#	178			300# /150#	178			600# / 150#	179			900# / 150#	197			1500# / 150#	197								
Q 7238	4" N 6"	210	610	88	4" N 6"	210	610	90																		
	150# /150#	197			300# /150#	197			600# / 150#	197			900# / 150#	197												
R 10387	4" P 6"	229	610	88	4" P 6"	229	610	90																		
	150# /150#	181			300# /150#	181			600# / 150#	225			900# / 150#	225												
S 16972	6" Q 8"	241	659	156	6" Q 8"	241	659	160																		
	150# /150#	240			300# /150#	240			600# / 150#	240																
T 16972	6" R 8"	241	659	156	6" R 8"	241	659	160																		
	150# /150#	240			300# /150#	240			600# / 150#	240																
U 16972	8" T 10"	279	795	190	8" T 10"	279	795	195																		
	150# /150#	276			300# /150#	276																				

Model 1415 B Big size

TECHNICAL DATA SHEET

Description

Type	Safety and Relief valve
Connections	Flanged ASME/ANSI B16.5
Rating	150#/300# RF
Material	Carbon steel A 216 WCB Stainless steel A 351 CF3M Special constructions
Temperature range	-28°C to +400°C
Stainless steel	-96°C to +400°C

Requirements

Calculation	API RP 520
Design / Size	API STD 526, ASME Section VIII
Materials	EN / ASTM / ASME
Inspection	EN-4126-1 / 7 API STD 527 MSS-SP-55
Tolerances	EN-4126-1 and ASME UG-126

Construction and materials

Item	Description	Material	Material
		Carbon Steel	Stainless steel
1	Nozzle	AISI-304	AISI-316L
2	Body	A216 WCB	A351 CF-3M
3	Bonnet	A216 WCB	A351 CF-3M
4	Cap	A351 CF 8	A351 CF 8
5	Disc	AISI-316L	AISI-316L
6	Guide	AISI-316L	AISI-316L
7	Push Road	AISI-316L	AISI-316L
8	Spring Button	C. Steel zn.	AISI-304
9	Ajusting Screw	AISI-420	AISI-303
10	Tensor Nut	C. Steel zn.	AISI-303
11	Spring	Carbon Steel	AISI-302
12	Lever	A351 CF 8	A351 CF 8
17	Release nut	AISI-316L	AISI-316L
18	Lever axis	AISI-303	AISI-303
19	Packing lever axis	AISI-303	AISI-303
20	Gasket	NBR+MF	NBR
21	Gasket	NBR+MF	NBR
22	Gasket	Viton	Viton
27	Bellow	AISI-316 TI	AISI-316 TI
28	Soft seat	Viton / PTFE	Viton / PTFE
24	Screw-nut	Carbon Steel	AISI-316

○ Recommended spare parts

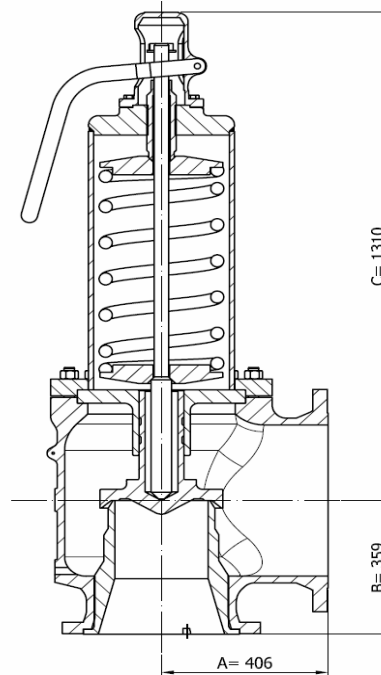
Palanca manual
Lifting device



Palanca estanca
Sealed packing lever



T. Prueba
Test gag



Cpo. intermedio abierto
Open bonnet



Fuelle
Bellows



Obturador o-ring
Disc soft seat

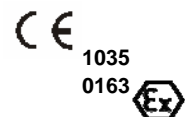


Technical information

Applications	Steam, gases, vapours and liquids
Min. Set pressure	0,2 barg
Seat	metal-metal, PTFE, Nozzle SS+Stellite
Overpressure	10% for steam, gas and vapour 20% for fire exposure 25% for liquid on thermal relief
Blowdown	7%
Tolerance Set pressure	± 3%
Discharge coefficients	k= 0,975 for gases k= 0,64 for liquids

Dimensions

Inlet	Outlet	Orifice	Area (mm ²)	A (mm)	B (mm)	C (mm)	Weight (kg)
8"	10"	U	21383	279	276	795	200
10"	14"	V	31415	406	305	1390	750
12"	16"	W	40808	406	359	1432	850
16"	20"	X	72950	533	432	1943	1850



Model 1000

TECHNICAL DATA SHEET

Description

Type	Vacuum breaker
Connections	Flanges EN PN-10,16 or ANSI 150# RF
Rating	PN-10
Material	Aluminium, carbon steel and Stainless steel
Temperature range	-10 to +260°C

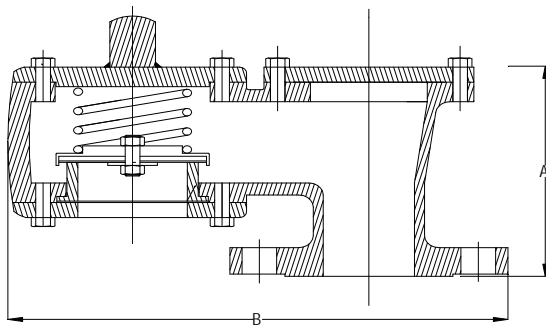
Requirements

Calculation	TOSACA 1001
Design	EN-12516-1, EN-1092-1 DIN 259 & ANSI B2.1
Materials	EN
Inspection	EN-4126-1 / 7

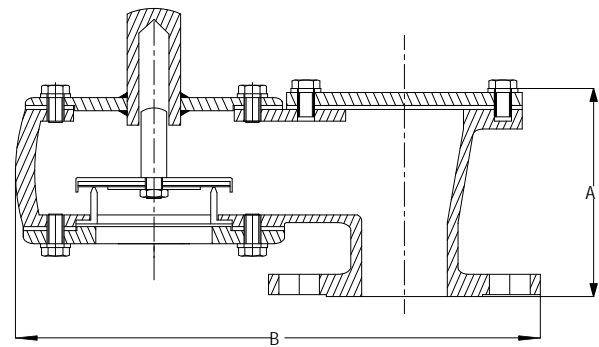
Construction and materials

Item	Description	Aluminium	Carbon steel	Stainless steel
1	Body	BS 1490 Gr LM6	ASTM A216 Gr WCB	ASTM A 351 Gr CF8
2	Seat	AISI-304	AISI-304	AISI-304
3	Diaphragm	PTFE	PTFE	PTFE
5	stem	AISI-304	AISI-304	AISI-304
6	Weatherhood	Aluminium	Aluminium	Aluminium
7	Birds screen	AISI-304	AISI-304	AISI-304

○ Recommended spare parts



Spring loaded



Weight loaded

Technical information

Applications	Air
Min. Set pressure	-2 mbar
Max. Set pressure	-750 mbar
Weight loaded	< 35 mbarg
Spring loaded	> 35 mbarg
Overpressure	10%
Blowdown	10%
Tolerance Set pressure	± 3%
Others materials	Hastelloy, Titanium

Dimensions

Model	1000	Flanges EN	ANSI	A	B	Weight (Kg)
		50	2"	145	280	10
		80	3"	165	400	12
		100	4"	180	440	14
		150	6"	220	610	20
		200	8"	370	720	30
		250	10"	390	840	40
		300	12"	410	1000	60



Description

Type	Pressure & Vacuum relief valve
Connections	Flanges EN PN-10 or ANSI 150# RF Screwed DIN 259 or ANSI B-2.1
Rating	PN-10
Material	Al / carbon steel / Stainless steel
Temperature range	-10 to +260°C

Requirements

Calculation	PRECON PFCI/BV/2046
Design	EN-12516-1, EN-1092-1 DIN 259 & ANSI B2.1
Materials	ASTM / EN
Inspection	EN-4126-1 / 7

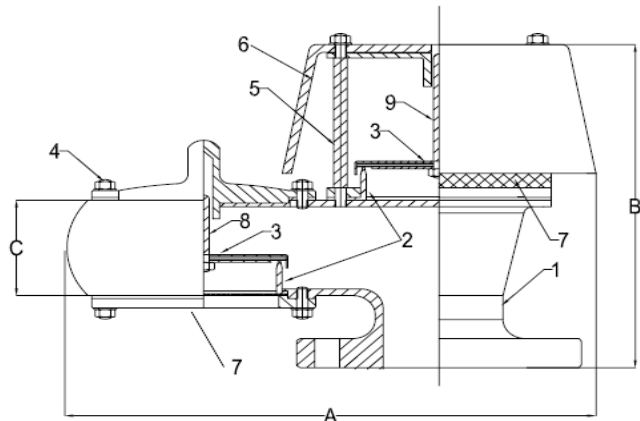
Construction and materials

Item	Description	Descripción	Material Aluminium	Material Carbon steel	Material Stainless steel
1	Body	Cuerpo	Aluminium alloy LM 6	ASTM A 216 Gr WCB	ASTM A 351 Gr CF 8
2	Press/Vac seat	Tobera	S.S. AISI 304	S.S. AISI 304	S.S. AISI 316
3	Pallet	Obturador	S.S. AISI 304	S.S. AISI 304	S.S. AISI 316
4	Bolts nuts	Tuercas	S.S. AISI 304	S.S. AISI 304	S.S. AISI 304
5	Studs	Tornillos	S.S. AISI 304	S.S. AISI 304	S.S. AISI 304
6	Weather hood	Protector presión	Aluminium	Aluminium	Aluminium
7	Wire mesh	Salida vacío	Perforated sheet	Perforated sheet	Perforated sheet
8	Vacuum stem	Espiga vacío	S.S. AISI 304	S.S. AISI 304	S.S. AISI 304
9	Pressure stem	Espiga presión	S.S. AISI 304	S.S. AISI 304	S.S. AISI 304

○ Recommended spare parts

Dimensions

Flanges		A	B	C	Weight
EN	ANSI	(mm)	(mm)	(mm)	(Kg)
50	2"	290	270	100	8
80	3"	415	300	110	12
100	4"	455	320	115	25
150	6"	600	340	120	50
200	8"	715	460	180	60
250	10"	420	500	200	80



Technical information

Applications	Air
Min. Vacuum pressure	-15 mbar
Max. Vacuum pressure	-750 mbar
Min. Set pressure	
Max. Set pressure	
Overpressure	10%
Blowdown	10%
Tolerance Set pressure	± 3%



Lifting device



Manual lifting device.
Steam service must have lifting device.

Test gag



To test pressure of the installation.
After testing test gag must be removed.
Test gag is possible for safety transport of the valve.

Lift indicator



Proximity switch and valve position indicator.
Inductive prox 3-wire switching type
Supply voltage 20 to 264 VAC, 50/60 Hz.
Enclosure ratings IEC 144 IP67
Option Eex / ATEX

Packing lever



Manual lifting device.
This system to ensure that the fluid does not escape to the atmosphere.

Nozzle ring/Blowdown ring



To help the control flow capacity.
Adjustable blowdown

Specials spring



Carbon steel	120° C
Chrome Vanadium	219° C
S.S. AISI.302	260° C
Inconel X-750	500° C

Bellows



To protect:
Constant back pressure
Variable back pressure
Material: S.S. AISI-316TI
Max. Back pressure 40%

Trim in hastelloy



Nozzle and disc: Hastelloy C 276
(Nickel-molybdenum-tungsten alloy)
Excellent general corrosion resistance
Rest of valve: S.S. AISI-316L
Bursting disc

Stellite in the seat



In PN-63, PN-100
600#, 900# and 1500#

Heating Jacket



Areas of application are system to be protected from media which are viscous and have tendency to crystallise.
Material: S.S. AISI-316L



TOSACA, S.A.

c/ Guifre, 791
08918-Badalona
SPAIN

www.tosaca.com