

**High-strength aramid yarns with PTFE lubricant**

**Applications:**

- Suitable for a wide range of chemicals and where excellent dimensional stability is required.
- High-strength material yarns Klingerlock braided to produce a packing for sealing within extreme pumping applications - rotary or reciprocating.

**Properties:**

- Klinger K25 is manufactured from aramid yarns, to which we add PTFE as a break-in lubricant. The Klingerlock braiding process is used.
- K25 is very temperature tolerant and can operate effectively within a wide range.

**Typical Specifications:**

Min. temperature	-100°C
Max. steam temperature	280°C
Max. temperature	280°C
Max. dynamic pressure	30bar
Max. reciprocating pressure	100bar
Max. speed	20m/s
pH range	2-12

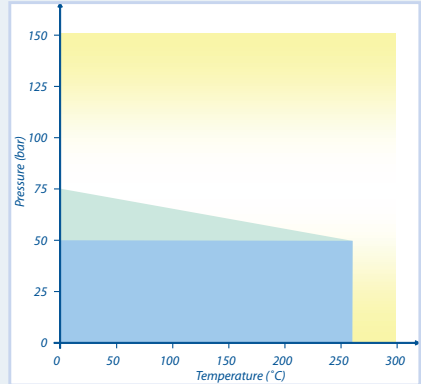
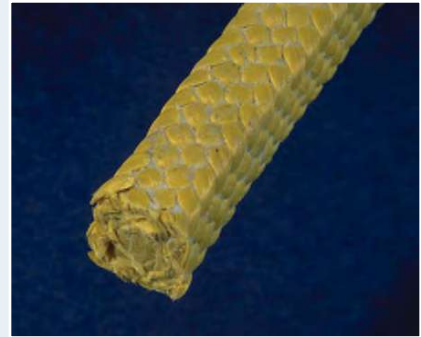
The packing should not be subjected to the maximums of temperature, pressure and speed simultaneously.

**Tests and Certifications:**

- WRAS Approval for use with potable water

**Availability:**

Size (mm)	Length (m)	Size (mm)	Length (m)
3,2 x 3,2	8	12,5 x 12,5	8
5,0 x 5,0	8	14,0 x 14,0	8
6,5 x 6,5	8	16,0 x 16,0	8
8,0 x 8,0	8	19,0 x 19,0	8
9,5 x 9,5	8	22,0 x 22,0	8
11,0 x 11,0	8	25,0 x 25,0	8



**Pressure/Temperature Graph:**

- Area 1: Usually satisfactory to use without reference.
- Area 2: Usually satisfactory, but suggest you refer to Klinger for advice.
- Area 3: Caution: May be suitable but essential that you refer to Klinger for advice.